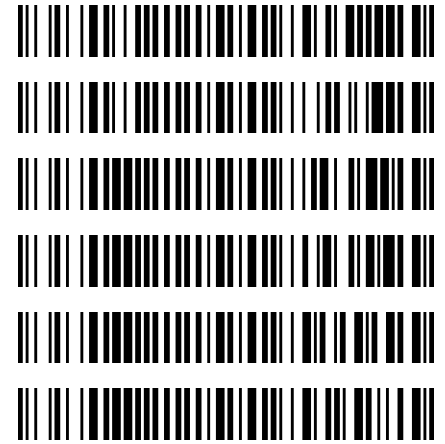


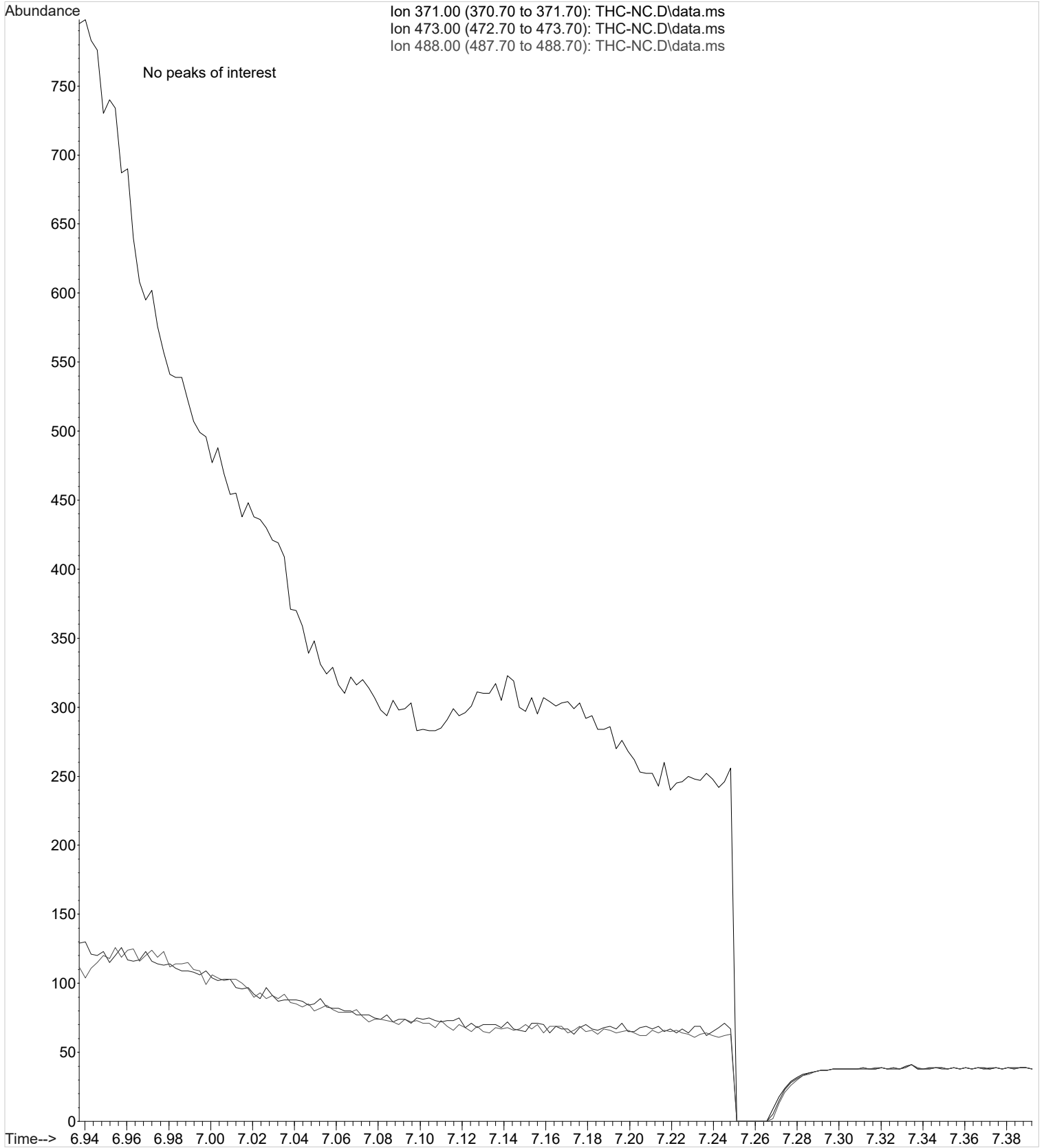
Bylee

Worklist: 2362

<u>LAB_CASE</u>	<u>ITEM</u>	<u>TASK_ID</u>	<u>DESCRIPTION</u>
C2018-0602	2	114465	AM 3 Urine Carboxy-THC
C2018-0631	2	114466	AM 3 Urine Carboxy-THC
P2018-0920	2	114468	AM 3 Urine Carboxy-THC
P2018-0941	1	114469	AM 3 Urine Carboxy-THC
P2018-0958	1	114470	AM 3 Urine Carboxy-THC
P2018-0967	1	114471	AM 3 Urine Carboxy-THC



File :C:\My Files\cshrum\Desktop\Consolidated\Data\URINE\am 3 work
... list 2362\THC-NC.D
Operator : ISP\datastor
Instrument : Major Mass Spec
Acquired : 01 May 2018 07:55 using AcqMethod U-CANN 3-2018.M
Sample Name: Negative Control
Misc Info : Lot # POC112116; AM #3 Worklist 2362



Data Path : C:\My Files\cshrum\Desktop\Consolidated\Data\URINE\am 3 worklist 2362\
 Data File : THC-NC.D
 Acq On : 01 May 2018 07:55
 Operator : ISP\datastor
 Sample : Negative Control
 Misc : Lot # POC112116; AM #3 Worklist 2362
 ALS Vial : 31 Sample Multiplier: 1

Integration Parameters: events.e
 Integrator: ChemStation

Method : C:\gcms\1\methods\TOX.M
 Title :

Signal : EIC Ion 371.00 (370.70 to 371.70): THC-NC.D\data.ms

peak #	R.T. min	first scan	max scan	last scan	PK TY	peak height	corr. area	corr. % max.	% of total
--------	----------	------------	----------	-----------	-------	-------------	------------	--------------	------------

No peaks were detected using the method integration parameters!
 Signal : EIC Ion 473.00 (472.70 to 473.70): THC-NC.D\data.ms

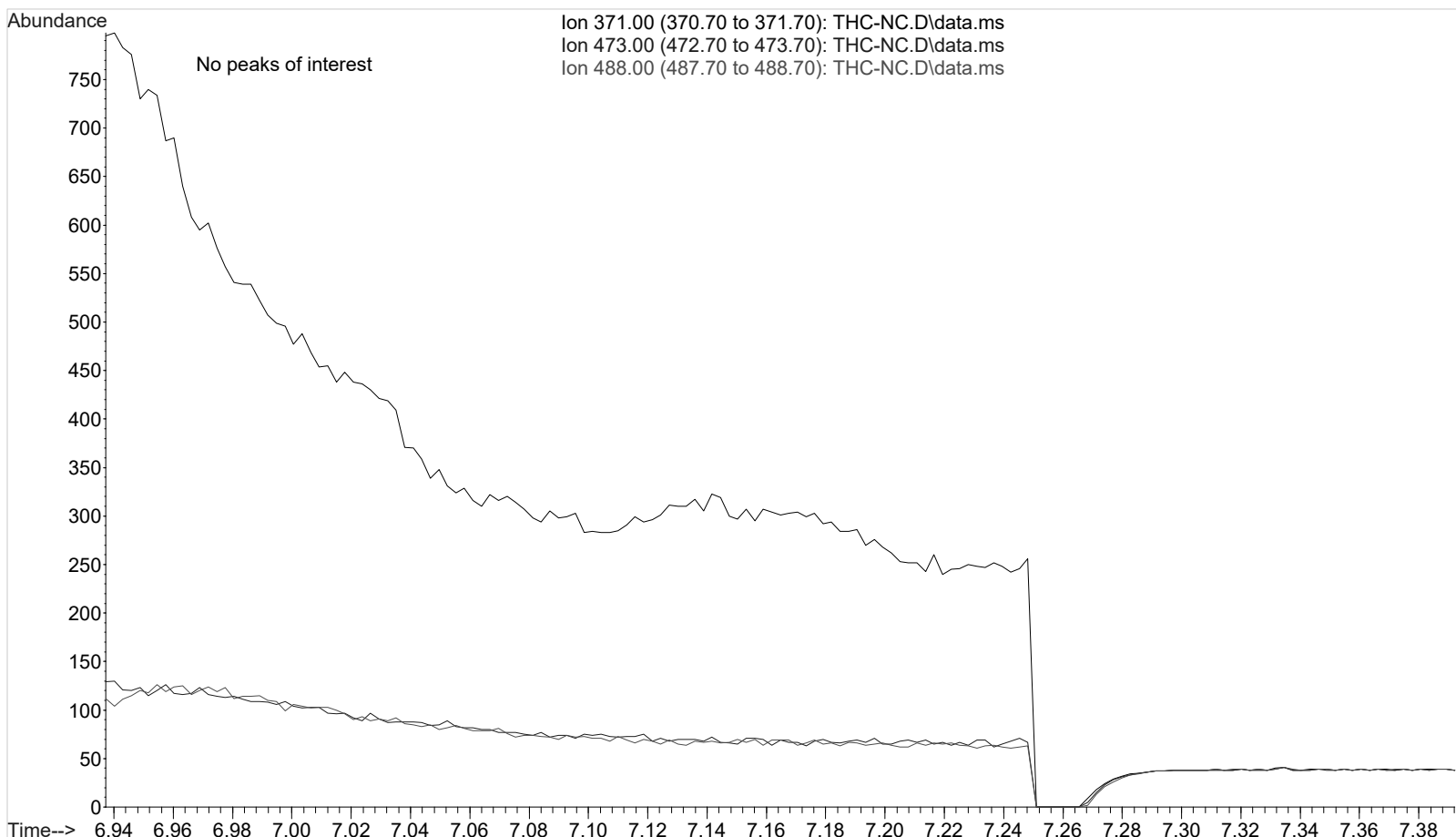
peak #	R.T. min	first scan	max scan	last scan	PK TY	peak height	corr. area	corr. % max.	% of total
--------	----------	------------	----------	-----------	-------	-------------	------------	--------------	------------

No peaks were detected using the method integration parameters!
 Signal : EIC Ion 488.00 (487.70 to 488.70): THC-NC.D\data.ms

peak #	R.T. min	first scan	max scan	last scan	PK TY	peak height	corr. area	corr. % max.	% of total
--------	----------	------------	----------	-----------	-------	-------------	------------	--------------	------------

No peaks were detected using the method integration parameters!

TOX.M Tue May 01 08:48:27 2018



Data Path : C:\My Files\cshrum\Desktop\Consolidated\Data\URINE\am 3 worklist 2362\
Data File : THC-PC1.D
Acq On : 01 May 2018 08:06
Operator : ISP\datastor
Sample : Spiked Positive c-THC Control
Misc : c-THC lot # 0497429 in Negative Lot # POC112116; Worklist 2362
ALS Vial : 32 Sample Multiplier: 1

Integration Parameters: events.e
Integrator: ChemStation

Method : C:\gcms\1\methods\TOX.M
Title :

Signal : EIC Ion 371.00 (370.70 to 371.70): THC-PC1.D\data.ms

peak #	R.T. min	first scan	max scan	last scan	PK TY	peak height	corr. area	corr. % max.	% of total
1	7.027	17	32	54	VV 2	6080	118803	100.00%	100.000%

Sum of corrected areas: 118803

Signal : EIC Ion 473.00 (472.70 to 473.70): THC-PC1.D\data.ms

peak #	R.T. min	first scan	max scan	last scan	PK TY	peak height	corr. area	corr. % max.	% of total
1	7.026	15	32	58	BV 2	2219	43698	100.00%	100.000%

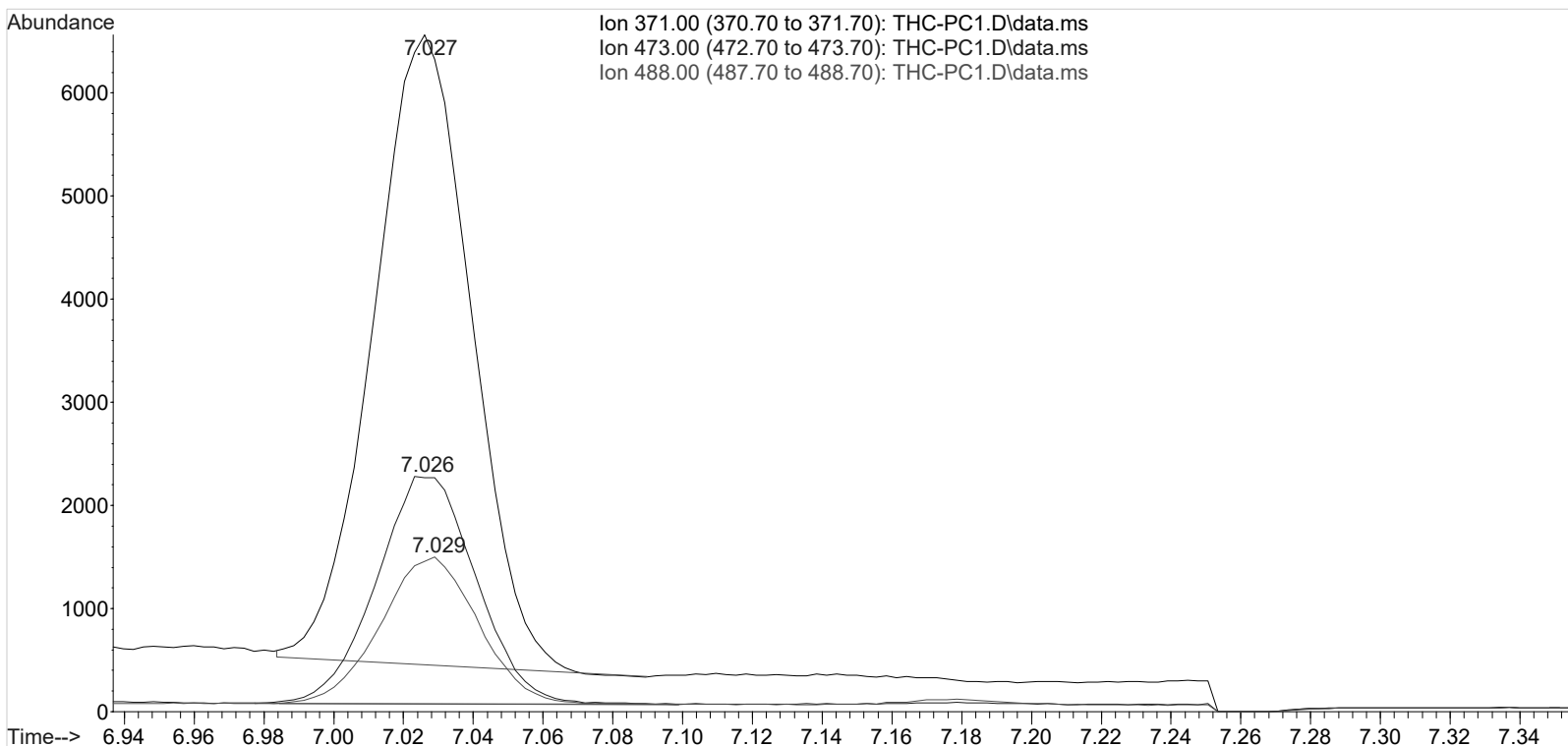
Sum of corrected areas: 43698

Signal : EIC Ion 488.00 (487.70 to 488.70): THC-PC1.D\data.ms

peak #	R.T. min	first scan	max scan	last scan	PK TY	peak height	corr. area	corr. % max.	% of total
1	7.029	18	33	57	BV 2	1418	27667	100.00%	100.000%

Sum of corrected areas: 27667

TOX.M Tue May 01 08:48:43 2018



Data Path : C:\My Files\cshrum\Desktop\Consolidated\Data\URINE\am 3 worklist 2362\
Data File : THC-PC2.D
Acq On : 01 May 2018 11:52
Operator : ISP\datastor
Sample : Spiked Positive c-THC Control
Misc : c-THC lot # 0497429 in Negative Lot # POC112116; Worklist 2362
ALS Vial : 32 Sample Multiplier: 1

Integration Parameters: events.e
Integrator: ChemStation

Method : C:\gcms\1\methods\TOX.M
Title :

Signal : EIC Ion 371.00 (370.70 to 371.70): THC-PC2.D\data.ms

peak #	R.T. min	first scan	max scan	last scan	PK TY	peak height	corr. area	corr. % max.	% of total
1	7.017	12	29	50	VV	14038	275572	100.00%	100.000%

Sum of corrected areas: 275572

Signal : EIC Ion 473.00 (472.70 to 473.70): THC-PC2.D\data.ms

peak #	R.T. min	first scan	max scan	last scan	PK TY	peak height	corr. area	corr. % max.	% of total
1	7.018	10	29	61	BV	5156	101733	100.00%	100.000%

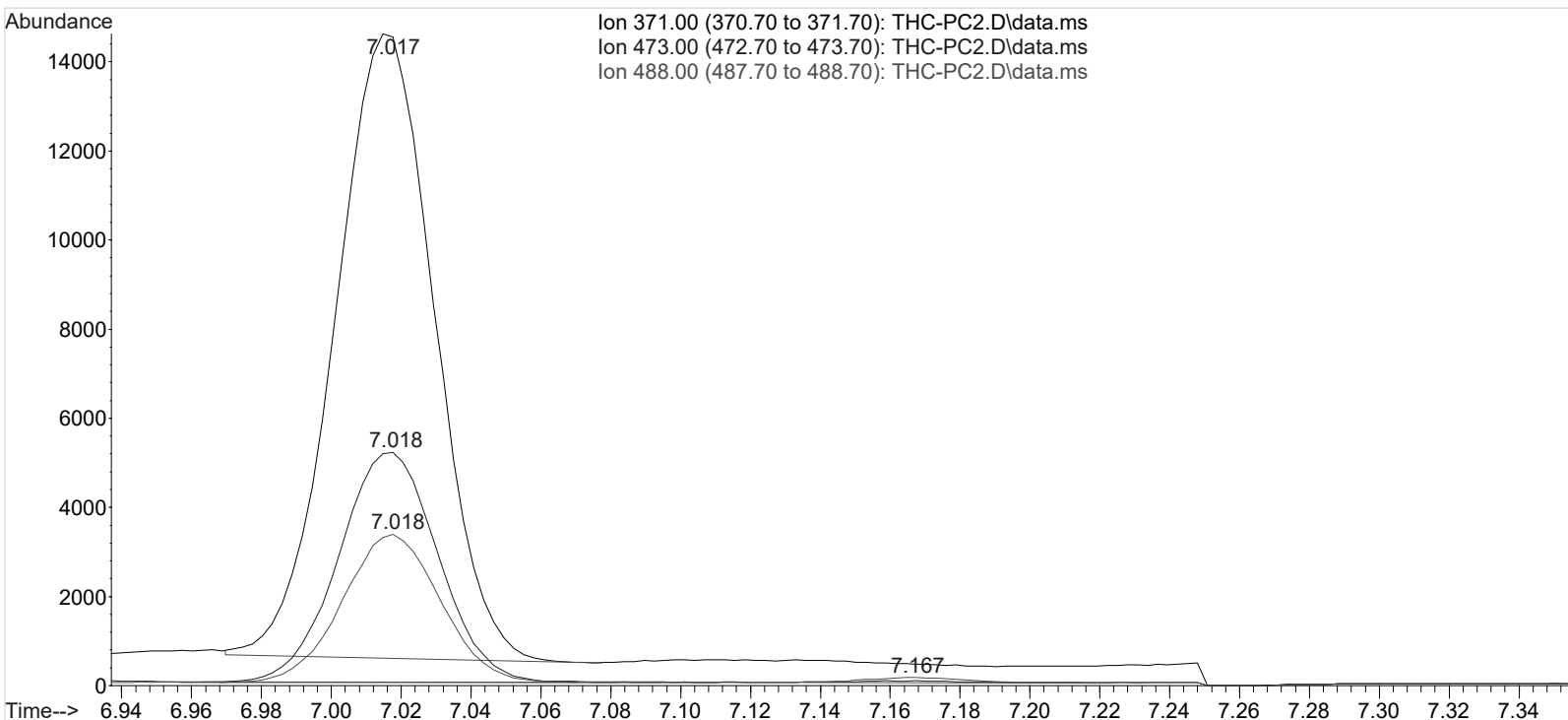
Sum of corrected areas: 101733

Signal : EIC Ion 488.00 (487.70 to 488.70): THC-PC2.D\data.ms

peak #	R.T. min	first scan	max scan	last scan	PK TY	peak height	corr. area	corr. % max.	% of total
1	7.018	12	29	56	BB	3308	64725	100.00%	96.620%
2	7.167	70	81	99	BB 3	118	2264	3.50%	3.380%

Sum of corrected areas: 66990

TOX.M Tue May 01 12:05:35 2018



Data Path : C:\My Files\cshrum\Desktop\Consolidated\Data\URINE\am 3 worklist 2362\
Data File : THC-C3.D
Acq On : 01 May 2018 08:29
Operator : ISP\datastor
Sample : Biorad C3 Control
Misc : C3 Lot # 68440; Worklist 2362
ALS Vial : 33 Sample Multiplier: 1

Integration Parameters: events.e
Integrator: ChemStation

Method : C:\gcms\1\methods\TOX.M
Title :

Signal : EIC Ion 371.00 (370.70 to 371.70): THC-C3.D\data.ms

peak #	R.T. min	first scan	max scan	last scan	PK TY	peak height	corr. area	corr. % max.	% of total
1	7.024	16	31	52	VV	2363	45972	100.00%	100.000%

Sum of corrected areas: 45972

Signal : EIC Ion 473.00 (472.70 to 473.70): THC-C3.D\data.ms

peak #	R.T. min	first scan	max scan	last scan	PK TY	peak height	corr. area	corr. % max.	% of total
1	7.026	8	32	61	BB	863	16866	100.00%	100.000%

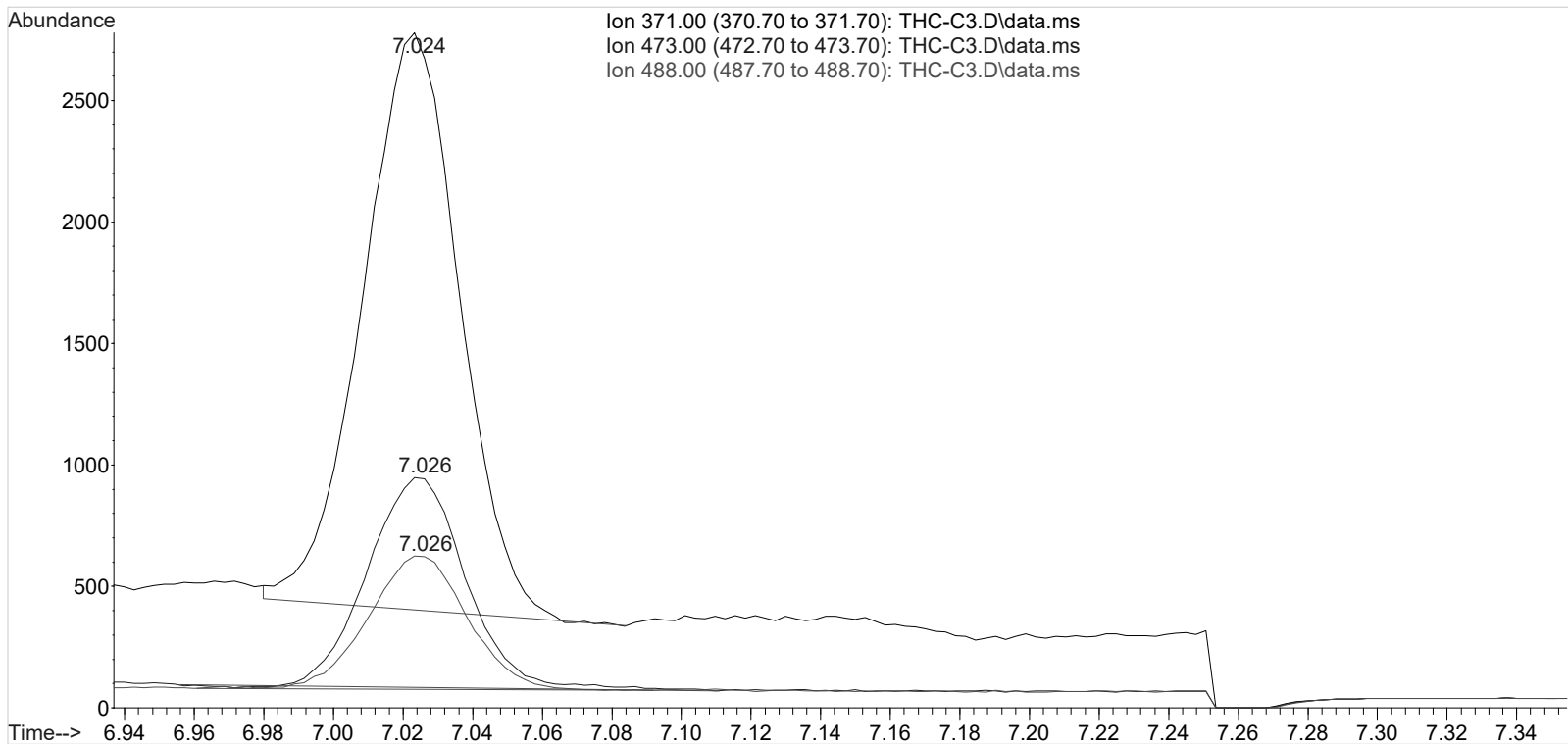
Sum of corrected areas: 16866

Signal : EIC Ion 488.00 (487.70 to 488.70): THC-C3.D\data.ms

peak #	R.T. min	first scan	max scan	last scan	PK TY	peak height	corr. area	corr. % max.	% of total
1	7.026	9	32	55	BB	550	10857	100.00%	100.000%

Sum of corrected areas: 10857

TOX.M Tue May 01 08:48:59 2018



AM #3 Urine Carboxy-THC QC Calculations

Run Date: 5/1/2018

Case Calculations:
Lab Case #: BRC3 Lot: 68440

<i>EIC Ion 371 Corr. Area:</i>	45972	
<i>EIC Ion 473 Corr. Area:</i>	16866	473:371 Ratio: 0.367
<i>EIC Ion 488 Corr. Area:</i>	10857	488:371 Ratio: 0.236

Quality Control Calculations:

Retention Time acceptable range: 6.927 to 7.117

	<i>1st ctrl</i>	<i>2nd ctrl</i>
<i>EIC Ion 371 Corr. Area:</i>	118803	275572
<i>EIC Ion 473 Corr. Area:</i>	43698	101733
<i>EIC Ion 488 Corr. Area:</i>	27667	64725

Approximate minimum corrected area of 371 ion: ~ 23761

<i>Ratio of 473:371</i>						
	<i>1st ctrl</i>	0.368	<i>2nd ctrl</i>	0.369	<i>avg.</i>	0.368
<i>Accepted Range</i> (+/- 20%)		0.295 - 0.442				

<i>Ratio of 488:371</i>						
	<i>1st ctrl</i>	0.233	<i>2nd ctrl</i>	0.235	<i>avg</i>	0.234
<i>Accepted Range</i> (+/- 20%):		0.187 - 0.281				

Carboxy-calculation sheet
Revision 0 effective date 10/23/13
Issuing authority: Quality Manager